

WINTER 2011

Signature MONTANA

RECREATION ■ LIFESTYLE ■ ART ■ BUSINESS ■ HISTORY



• **WESTERN ART WEEK**

Cowboy Stories Unfold on the Canvas

• **MASTERFUL CRAFTSMANSHIP**

Wilkinson Construction

• **WINTER WONDERLAND**

2011 Fashion Trends

• **GAME ON**

Mountain View Sports Complex



Legend Stone, LLC
Handcrafted Stone Veneer - Vertical Carving

Manufacturing - Sales

899-2246
Great Falls, Montana

legendstone@bresnan.net

...Make yourself at home on...

SPRING TREE RIDGE

New ridge lots available January 2011
CALL TODAY: 788-3741



SPRING TREE RIDGE
A WILKINSON DEVELOPMENT

- Spectacular views
- Established neighborhood
- Public water
- Trails and park with trout pond
- Strong covenants to maintain value

www.wilkinsonhomes.com



72" x 114"

Boulder Designs®

An Independently Owned And Operated Franchise

WWW.BOULDERDESIGNS.NET

RAY & AMY SIBRA
Big Sandy, MT
406.378.2490 | 406.390.1054

CUSTOM LANDSCAPE BOULDERS AND BUSINESS SIGNAGE
MADE JUST FOR YOU
YOU CHOOSE THE SIZE, SHAPE AND COLOR



30" x 48"



42" x 60"



12" x 22"



34" x 38"

PHOTOGRAPHY BY JIM WELLS

WILKINSON CONSTRUCTION

Building Exceptional Homes LIKE FATHER LIKE SON



ABOVE: A pond, waterfalls, and creek set amongst natural landscaping of native plants create an inviting setting for time spent outdoors.

RIGHT: Lots of glass and lots of views in the Wilkinson family home located in Spring Tree Ridge above the Missouri River.

You can take the man out of building, but you can't really take the builder out of the man.

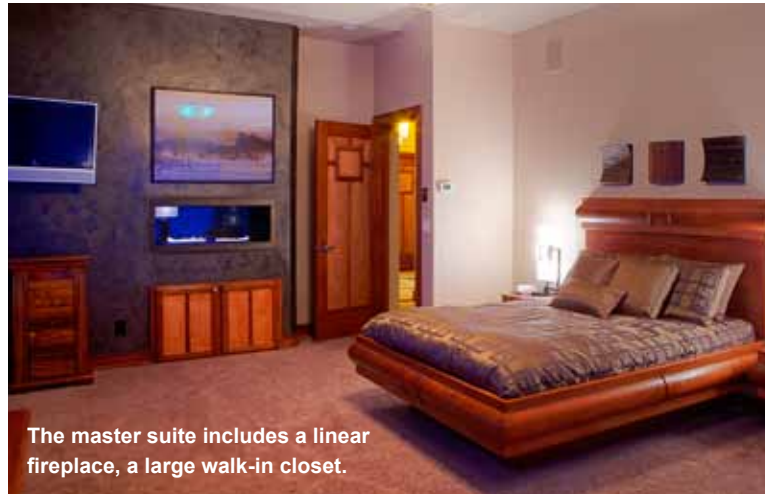
Tim Wilkinson grew up immersed in the world of building and learned the details of home construction while working alongside his father John, who established Wilkinson Construction in 1956. His father encouraged him to pursue new interests so after high school Tim attended Montana State University and then went on to study business law at the University of Wisconsin. Afterwards he joined a corporate law firm in northern Indiana where he bought a “fixer upper” house with his wife Darcy. As he began remodeling his home, a fire was rekindled. When he returned to Montana a few years later he found himself working side by side with his father once again with plans to maintain a small law practice as well. And then he realized that he enjoyed building more than practicing law.

That was nearly 20 years and dozens of houses ago. Even though his stint as a lawyer seemed like a diversion, Tim says that the critical thinking and business fundamentals he learned proved valuable when he started Spring Tree Ridge, a large development project. His experience in law just enhanced his ability to reenter the sphere of building. These skills, combined with his special interest and experience in woodworking and the creative and business aspects of building from the ground up he learned while working with his father, made his return to building an exciting enterprise.





His broad experience and talents allow him to offer a design-build firm that keeps much of the work in-house – all the way from excavation to finish work. Most of his work has been high-end traditional and European-style homes, but has also included an extensive church remodel, other styles of homes, and land development.



The master suite includes a linear fireplace, a large walk-in closet.

Many of his crew of 10-12 have been with him for over a decade, which helps in quality control and the consistency and flow of each project. Tim says, “They are a great crew and I couldn’t do it without them.”

He also credits his father’s mentoring in creativity and attention to detail as helping him in creating unique and quality homes. Tim does his own design work and planning.

His attention to detail begins with the site, where he strives to blend the construction into the landscape and to maximize

views with lots of glass and strategically designed spaces.

The generous use of natural materials helps to blend the structure inside and out. Using native products is also in step with his goal of eco-friendly construction.

His most creative and innovative home to date is probably his family’s home located in his Spring Tree Ridge

development. Tim felt that construction of his family home offered the perfect place to experiment, since he refuses to take risks with other people’s investment. His risk-taking was rewarded when he entered the Parade of Homes in 2010 and swept all categories including “Peoples Choice.”

The 4800 sq. ft. home strikes a stunning profile, set into the hillside above the Missouri River. Lots of glass provides sweeping panoramic views of the river and the surrounding mountains and ample natural light in the home. Warm woodwork combined

Specializing in custom audio, video systems that compliment the superior standards of a Wilkinson built home

State of the art service from design to installation

TWO GREAT STORES...ONE GREAT LOCATION: 3301 10TH AVE S., GREAT FALLS, MT

SOUND PRO | GOOD VIBRATIONS

406.453.4363 | 406.452.0336

REPRESENTING THE FINEST MANUFACTURERS

DENON SONY
 Boston Acoustics LG
 ONKYO EPSON
 YAMAHA Pioneer ELITE
 JAMO



LEFT: The elegant and contemporary theme of the home carries throughout the house.

BOTTOM LEFT: A freestanding soaking tub is only one of the many custom features of the master bath.

BELOW: This art glass and iron fixture is one example of Wilkinson's original design work.



ABOVE: State of the art and energy saving appliances blend into the kitchen with custom cabinetry.

LEFT: Gleaming granite countertops and lots of lighting accent the Chef's Kitchen.

This exquisite home was carefully and thoughtfully planned to blend into the surrounding hillside and to take advantage of tremendous views of the mountains and river.



BELOW: One way glass in this master suite bath insures privacy while enjoying the beautiful views.

with the sturdy and comfortable feel of native stone and travertine is featured throughout the home. The cherry and intricately figured maple cabinetry was designed by Tim and built by his crew. Tim also designed and fabricated many of the light fixtures including an art glass and iron fixture that serves as a centerpiece to the great room.

Features such as a round walk-in shower with mosaic tiles and one-way glass that offer outside views while showering or bathing reveal Tim's creative and imaginative side.

The house is eco-friendly with an ultra-high efficiency solar and gas heating system, which also provides supplemental in-floor heat. The house is super-insulated with heating and cooling supplied by a state-of-the-art variable speed system with four separate zones. The house is also set-up for solar panels on the backside of the garage roof where it can be hidden from view.


The landscaping uses xeriscaping, which focuses on drought tolerant and low maintenance native plants and includes a dwarf



clover green space instead of a traditional grass lawn. A fire pit set in bedrock amidst a bubbling creek, pond, and waterfalls creates a delightful place to enjoy the great Montana outdoors.

The house was a culmination of years of ideas and experiences that Tim has collected, serving a tribute to the great legacy that began over 50 years ago in his father and lives on in

his son through Wilkinson Construction.

For more information call Tim at 406-788-3741 or visit www.wilkinsonhomes.com. 



~A love for words and pictures led Kay Bjork to a career as a feature writer and photographer for numerous newspapers and magazines. Her home and family on Swan Lake have been the subject of many of her stories and photographs about their outdoor adventures including skating, skiing and hiking.